

Space for Lease

1482 Erie Blvd
Schenectady, NY 12305



Office Space For Lease

- *Great visibility*
- *Clean and well maintained*
- *Easy access to all major highways*
 - *Plenty of parking*
 - *Lots of natural light*
- *Tenants only pay janitorial*
- *18,850 SQ Ft Available*
- *Grounds well manicured*
 - *High growth area*
- *Close to all the downtown amenities and The Casino!*



For more information please contact :
Steve Cronin - steve@croninreny.com

11 Herbert Drive • Latham, New York 12110 • 518-469-2836

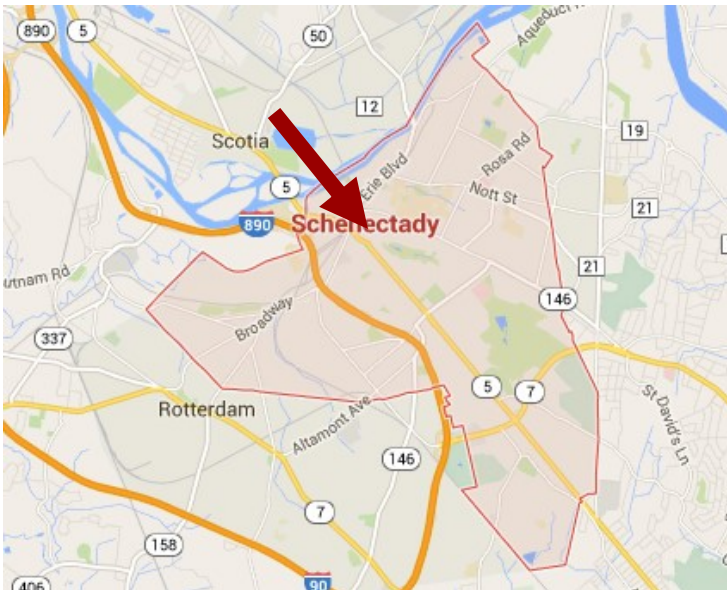
1482 ERIE Blvd. Schenectady, NY 12305



Rivers Casino

Outstanding location!

Free Parking!



Why not be located at the entrance to one of the capital regions premier attractions?



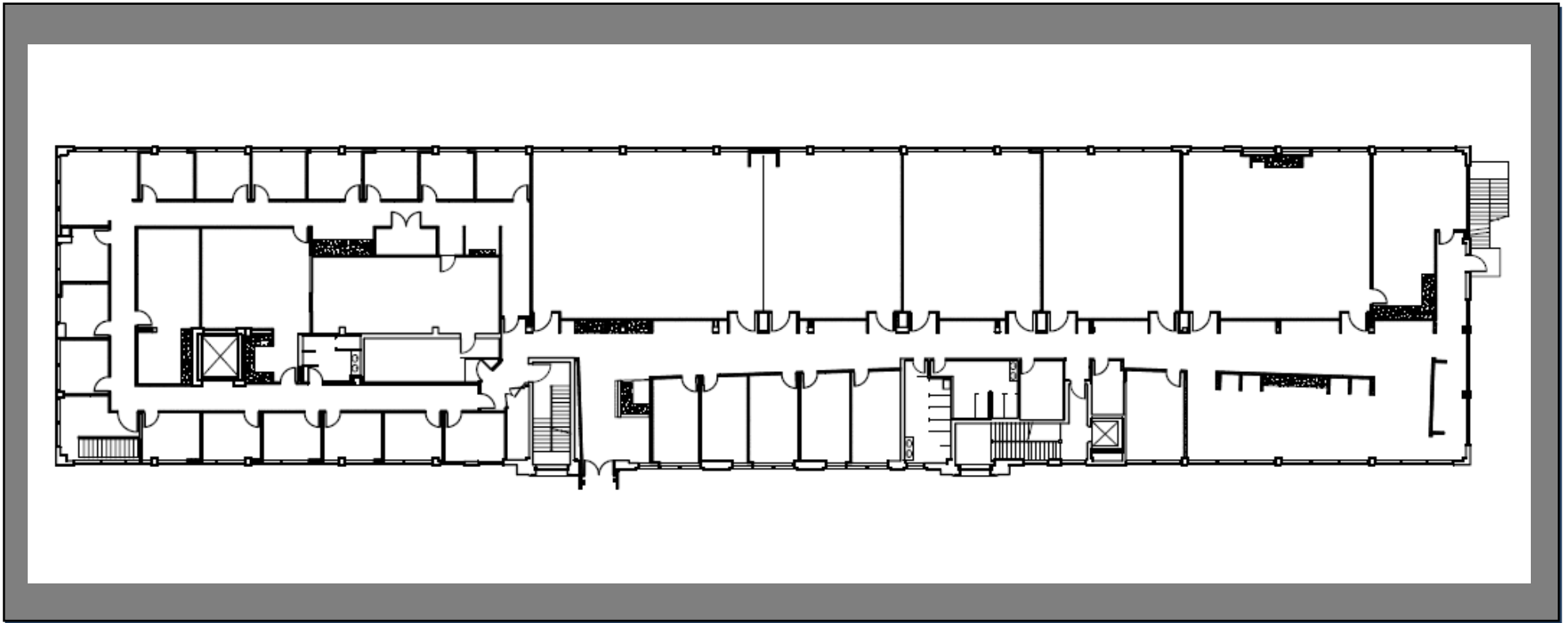
For more information please contact :

Steve Cronin - steve@croninreny.com

11 Herbert Drive • Latham, New York 12110 • 518-469-2836



1482 Erie Blvd
Schenectady, NY 12305



1482 Erie Blvd - 2nd Floor

Approximate Floor Plate 65' X 290' = 18,850 +/- Sq. Ft.

Steve Cronin - steve@croninreny.com

Cronin Real Estate NY, LLC • 11 Herbert Drive • Latham, New York 12110 • 518-469-2836