

FOR SALE - THE GLASS TAVERN



For More information: Steve Cronin - 518.469.2836 - steve@croninreny.com

Cronin Real Estate NY - 11 Herbert Drive - Latham, NY 12110

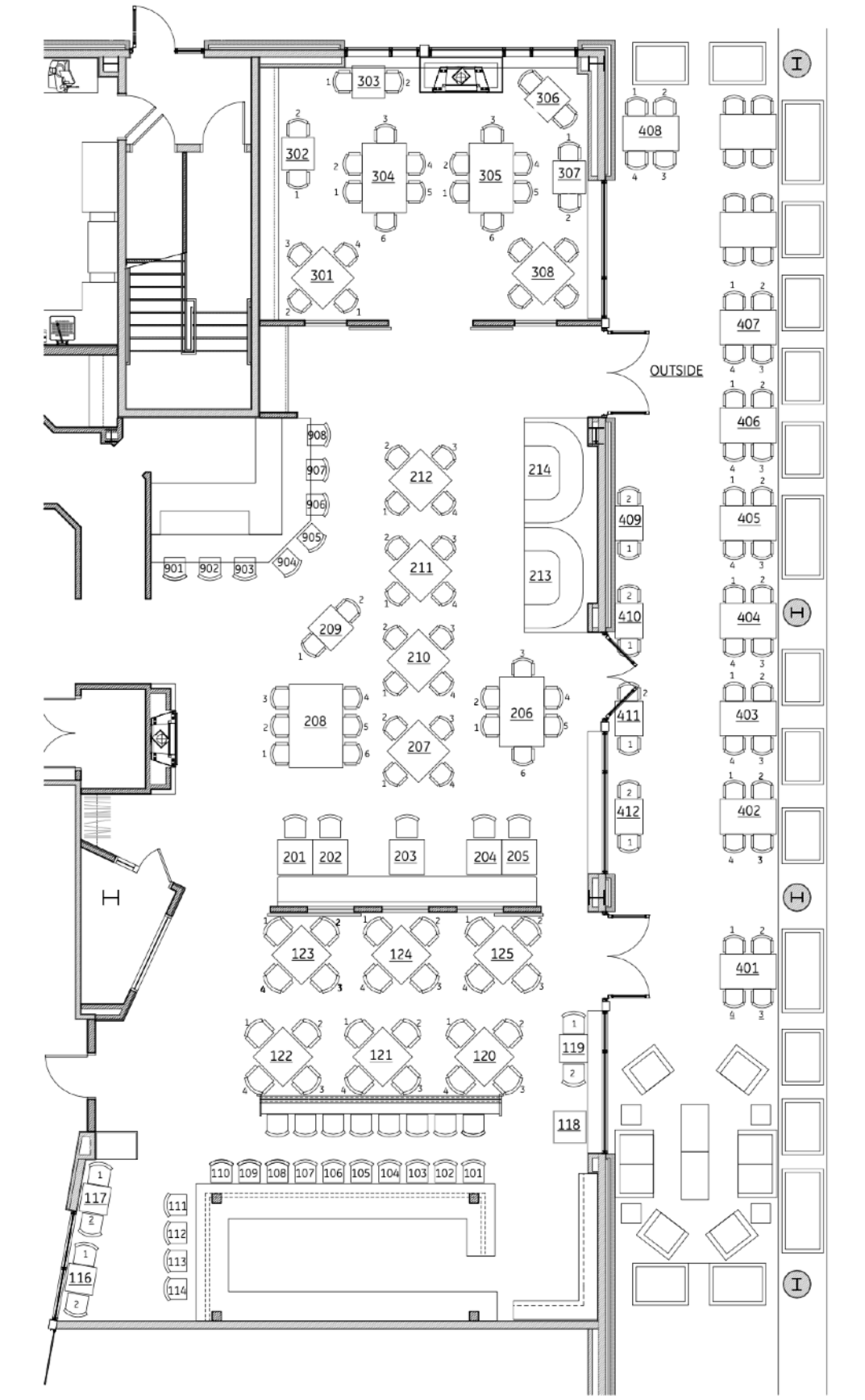
THE GLASS TAVERN



For More information: Steve Cronin - 518.469.2836 - steve@croninreny.com

Cronin Real Estate NY - 11 Herbert Drive - Latham, NY 12110

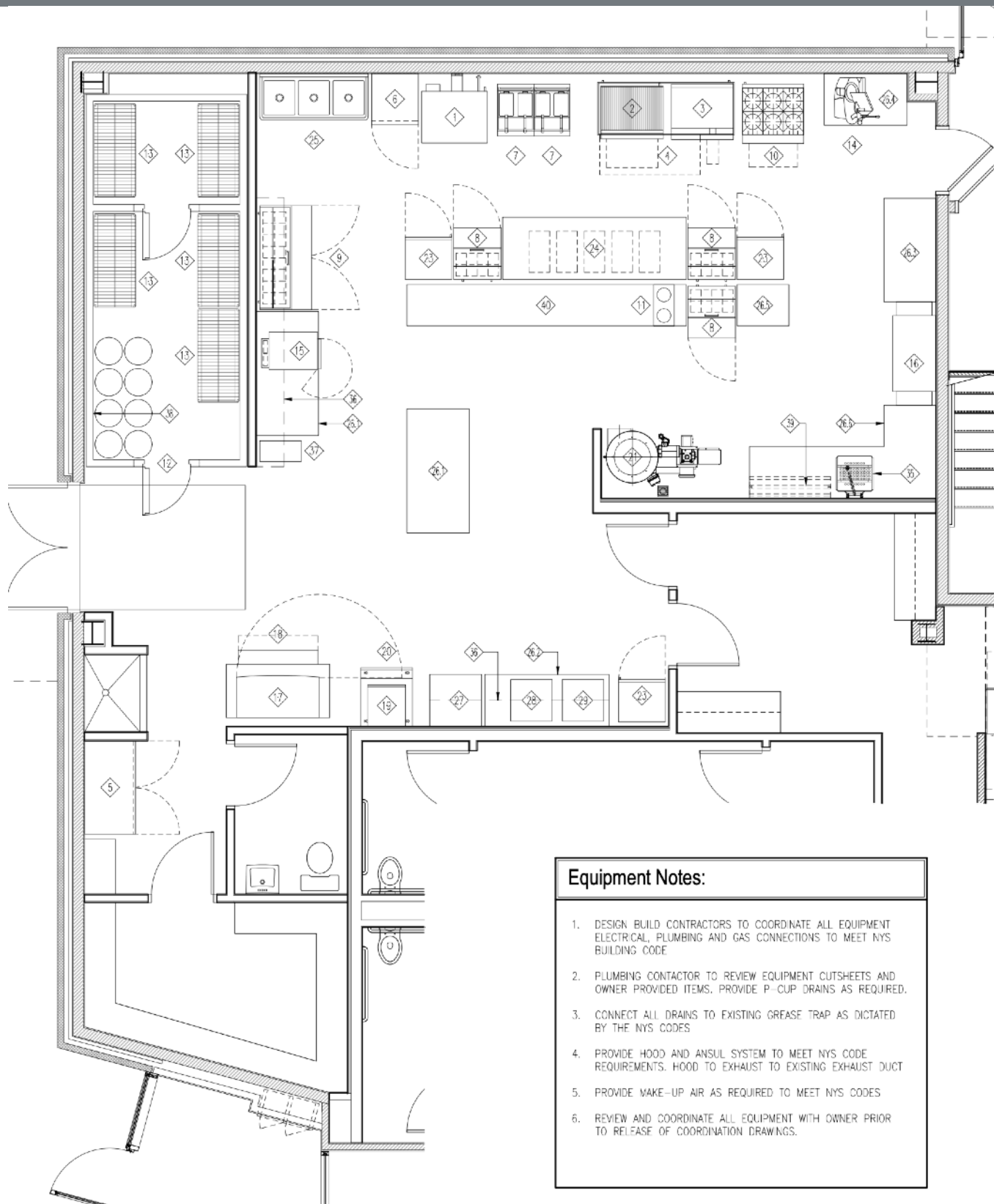
THE GLASS TAVERN - SEATING PLAN



For More information: Steve Cronin - 518.469.2836 - steve@croninreny.com

Cronin Real Estate NY - 11 Herbert Drive - Latham, NY 12110

THE GLASS TAVERN - KITCHEN LAYOUT



- Equipment Notes:**
1. DESIGN BUILD CONTRACTORS TO COORDINATE ALL EQUIPMENT ELECTRICAL, PLUMBING AND GAS CONNECTIONS TO MEET NYS BUILDING CODE
 2. PLUMBING CONTACTOR TO REVIEW EQUIPMENT CUTSHEETS AND OWNER PROVIDED ITEMS. PROVIDE P-CUP DRAINS AS REQUIRED.
 3. CONNECT ALL DRAINS TO EXISTING GREASE TRAP AS DICTATED BY THE NYS CODES
 4. PROVIDE HOOD AND ANSUL SYSTEM TO MEET NYS CODE REQUIREMENTS. HOOD TO EXHAUST TO EXISTING EXHAUST DUCT
 5. PROVIDE MAKE-UP AIR AS REQUIRED TO MEET NYS CODES
 6. REVIEW AND COORDINATE ALL EQUIPMENT WITH OWNER PRIOR TO RELEASE OF COORDINATION DRAWINGS.

1 Kitchen Equipment Plan
 A601 SCALE: 1/4" = 1'-0"



Located at 115 Saratoga Rd. - Glenville, NY

BUSINESS FEATURES:

- Located in Busy Multi Use Building
- Indoor and Outdoor Seating
- Plenty of Parking
- All Fixtures, Furniture and Equipment
- Very Active and Growing Community



For More information: Steve Cronin - 518.469.2836 - steve@croninreny.com